

# Family Links Nurturing Programme at HMP Wealstun

Lisa Shaw  
Hilary Chapman



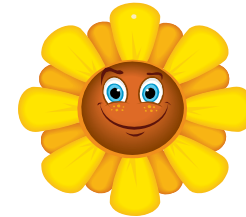
# HMP Wealstun Prison



- Category C – Closed – Male prison
- 820 Capacity
- Regime – Education, Production Workshops and Training Courses.
- Offender behaviour groups – Parenting courses, Drug and Alcohol Awareness.



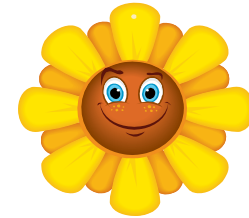
# The Programme



- Applications
- 10 sessions over 10 weeks
- Family visit.
- Classes run
- Dads involved



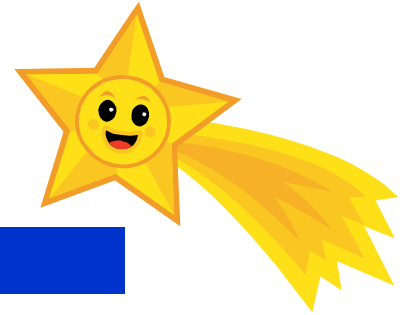
# Challenges for Dads



- Environment
- Birthdays, Christmas
- Phone calls
- Letters
- Visits
- Maintaining relationships



# Challenges to delivering the course - Security issues :-



- Wire in Parenting Puzzle Book
- Rewards
- Stickers,
- Touching
- Sentence plan
- Regime changes
- Visit issues



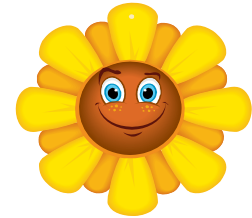
# Have a Go



- By phone
- On a visit
- By letter



# Outcomes of the Nurturing Programme



- New confidence
- New realisation
- Praise – giving and receiving
- Freedom to discuss parenting
- Nurturing
- Goodbye circle
- Improved relationships
- New strategies



# The Qualification



- What it is?
- When we started doing it?
- How many have passed?



# Feedback.



"I think our group has been friendly and all have taken this group to heart. It has also been said by us all that this course has given us more than any other within the prison"

"I was feeling a failure as a father but thanks to this course I'm confident enough to be the best dad I can"

"While we are in prison, we can do and say things to our kids that will help them while we are away"



**Thank you for listening.**

